

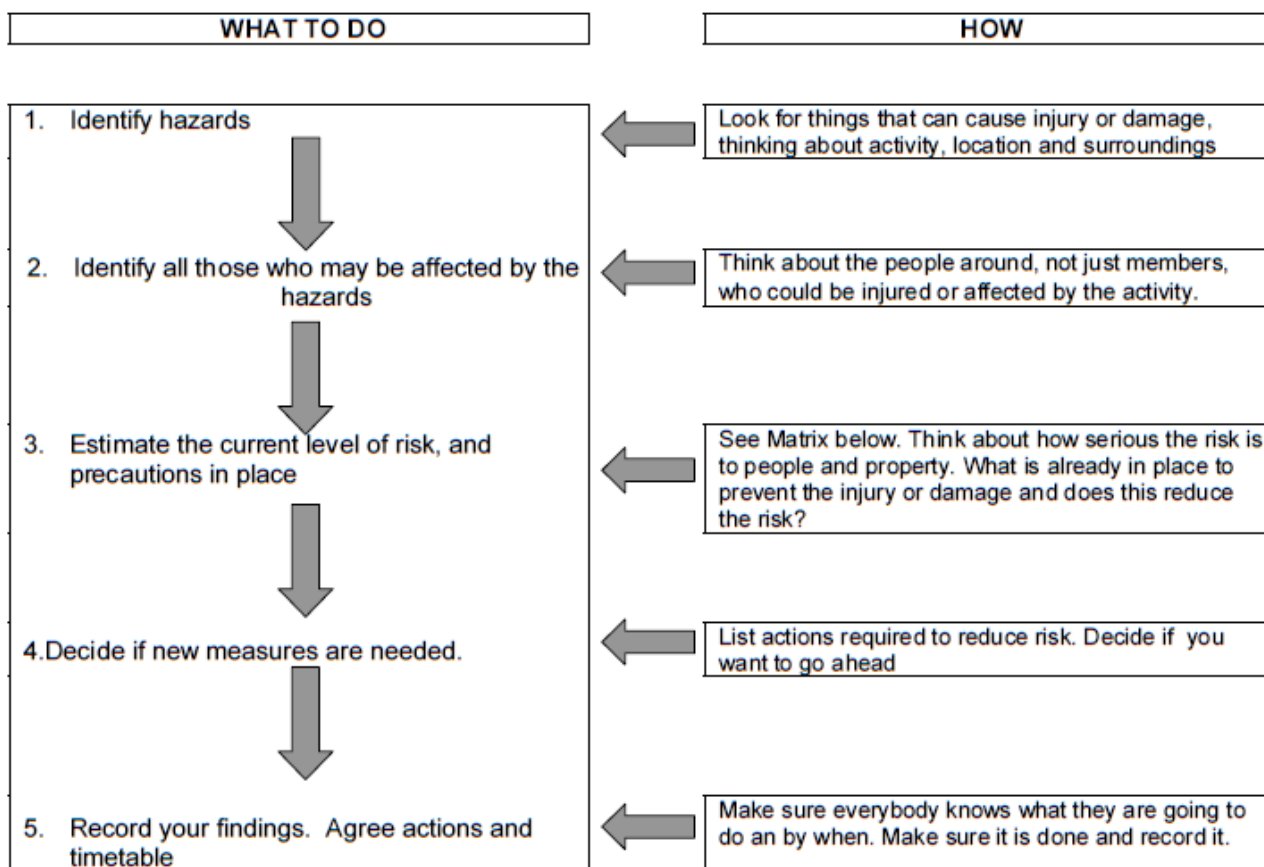


# Risk Assessment Form

Event/Activity: <b>Night Line (Blindfolded Rope Trail)</b>					Date: <b>May 2017</b> - To be reviewed <b>May 2018</b>	
Hazard	Who is affected?	What controls are in place?	Risk level (L/M/H)	Are further controls necessary?	Action by & date	Review by & date
Uneven terrain, rough ground - slips, trips and falls	Individual	Participants briefed by leader at beginning of session; behaviour monitored throughout session. Activity assessed by leader prior to taking part to be suitable for the age etc. of group. Activity supervised by a minimum of 2 responsible adults. Group to have first aider and first aid kit on hand. Participants to wear sturdy footwear and appropriate clothing (long sleeves and trousers ideal). Participants instructed to move at slow walking pace. Leader and other adult(s) to 'spot' participants when necessary.	M	Each time pre-use checks to ensure the route is clear of hazards (check for rabbit holes).		
Blindfolded; Walking into obstructions	Individual	Participants briefed by leader at beginning of session; behaviour monitored throughout session. Participants instructed to move at slow walking pace. Safety goggles worn reduce potential risk of eye injury.	M	Each time pre-use checks to ensure the route is clear.		
Stings - nettles, insects	Individual	Pre-use checks to ensure the route is clear of nettles.	L	Regular grounds maintenance		

Equipment failure or inappropriate use of equipment	Individual	Equipment suitable for the task. Participants to be briefed on how to go around the course. Use buddies if appropriate.	L	Regular check of course. Unserviceable equipment dealt with accordingly.		
Crawling through/under low elements such as the cargo net.	Individual	Leader to spot and assist as needed. Leader to act as a guide giving verbal encouragement and to physically assist if required. Leader to allow any people who are concerned about confined spaces to walk around any element they are not comfortable with.	M	Regular check of course. Unserviceable equipment dealt with accordingly		
Crossing tyres	Individual	Leader to act as a guide, giving verbal prompts and details of safety when necessary (e.g. mind the step) and also to physically guide the participants over elements when needed. Leaders will control the pace according to environmental conditions and the ability of group.	M	Regular check of course. Unserviceable equipment dealt with accordingly		
Wet weather	Individual Group	Leader to monitor weather conditions and adapt activity if necessary. Extra care to be taken in wet weather.	L	Activity not recommended if very wet		

## RISK MANAGEMENT



## RISK ASSESSMENT MATRIX

	Severity	Slight Harm	Harmful
Likelihood		superficial injuries, minor cuts and bruises	minor fractures, ill health leading to minor disability
UNLIKELY Rarely happens		LOW	LOW
LIKELY Often happens		LOW	MEDIUM
VERY LIKELY Nearly always happens		MEDIUM	HIGH
			Extremely Harmful multiple injuries, major fractures, fatalities

Helpful websites [www.Girlguiding.org.uk](http://www.Girlguiding.org.uk)

[www.hse.gov.uk](http://www.hse.gov.uk)